

Pearl Riverkeeper

Clean Water, Healthy Rivers



RIVERKEEPER.

Capital City Blueway





EXPLORE

PINEBELT BLUEWAYS, LEAF RIVER PHASE 1

COORDINATES

Launch Point: 31.438108, -89.3000352
Takeout Point: 31.342792, -89.280535

FLOAT TIME

Average of 6-7 Hours

DISTANCE
10.8 Miles

OPEN
Dawn to Dusk

WILDLIFE & VEGETATION NATURAL HABITATS



SWALLOW-TAIL KITE
Elaeoides forficatus



RIVER BIRCH
Betula nigra



WATER MOCCASIN
Agkistrodon piscivorus



BALDCYPRESS
Taxodium distichum



PEARL DARTER
Percina aurora



CARDINAL FLOWER
Lobelia cardinalis



BALD EAGLE
Haliaeetus albicilla



SPRUCE PINE
Pinus glabra



**YELLOW-BLOTCHED
SAWBACK TURTLE**
Graptemys flavimaculata



RIVER OAT
Chusqueanthium latifolium

BLUEWAY LEGEND



LAUNCH POINT -
Eastabuchie
Boat Ramp



TAKEOUT POINT -
Highway 11 Boat
Ramp



ABOUT THE BLUEWAYS

Pinebelt Blueways, Leaf River Phase 1 is a 10.8 mile one-way trip from the Church St. launch point to the takeout point at the Hwy 11 boat ramp in Hattiesburg.

The Blueway takes you south toward Hattiesburg, and there are several sandbars along the route. Enjoy responsibly.



BLUEWAYS RULES

- › No glass bottles.
- › No littering.
- › Explorers travel at own risk.
- › No trespassing on private property.
- › Mississippi law requires children under 12 years of age to WEAR a life vest while in a moving boat.



WATER CONSERVATION

The Leaf River offers education and recreation to its nature lovers and explorers. This project was made possible by the cooperative efforts of Pat Harrison Waterway, Piney Woods Chapter of the Land Trust for the Mississippi Coastal Plain, Jones County Board of Supervisors, Forrest County Board of Supervisors, and the City of Hattiesburg.

For more information, scan the QR code or visit **Piney Woods Chapter of the Land Trust for the Mississippi Coastal Plain** on Facebook.



What is a Blueway?

A blueway is a water path or trail that is developed with launch points, camping locations, and points of interest for canoeists, paddle boarders and kayakers.

Blueways are a way for communities to benefit from the economic and recreational potential of their rivers.

BLUEWAYS USE NATURE TO SUPPORT COMMUNITY

Capital City Blueway Proposal

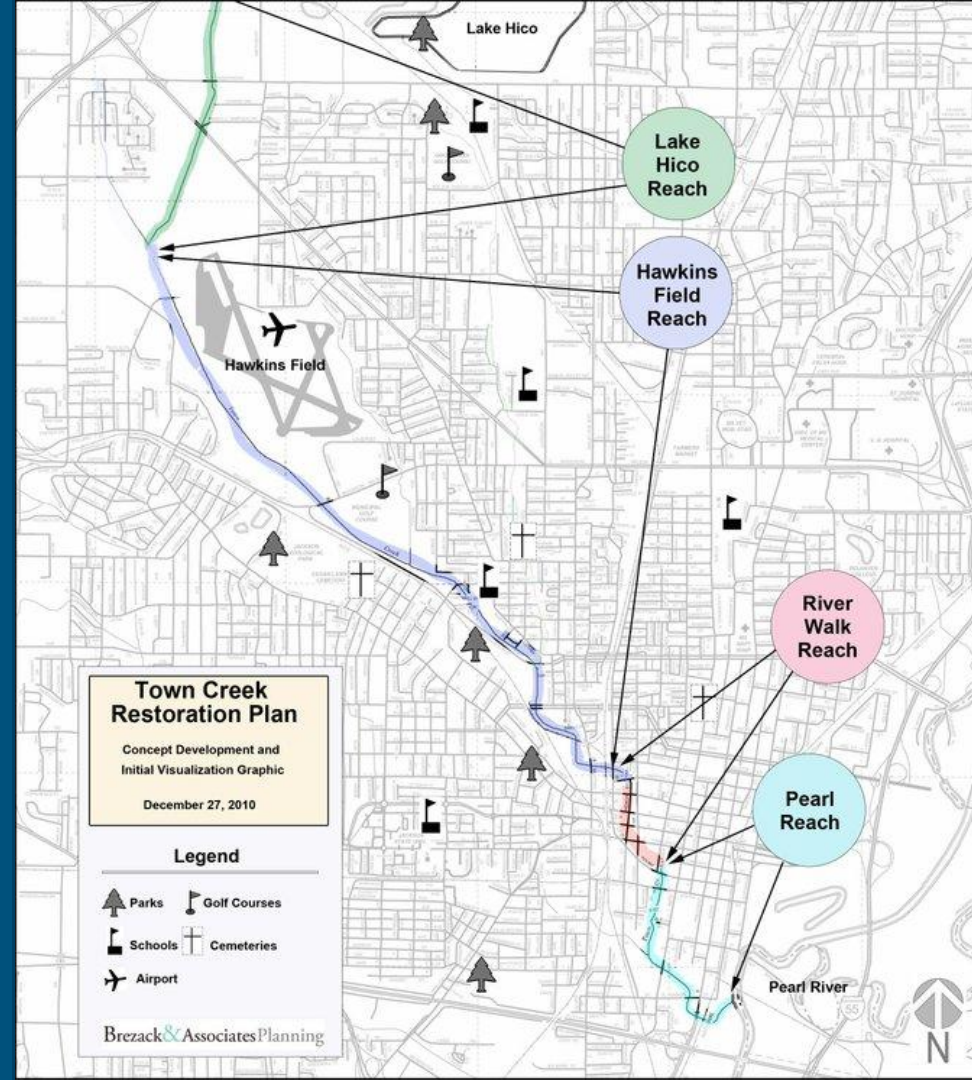
- Blueway educational and navigation signs from Ross Barnett Spillway Dam to Byram Swinging Bridge
- Additional public river access and kayak launches along Blueway
- Pearl Riverkeeper Clean Water Team “adopted” Blueway sections for monitoring and cleanups
 - Invasive species removal and endangered species habitat improvement on Blueway sandbars



*Map courtesy MS Lower Delta Partnership

Additional River Access Possibilities

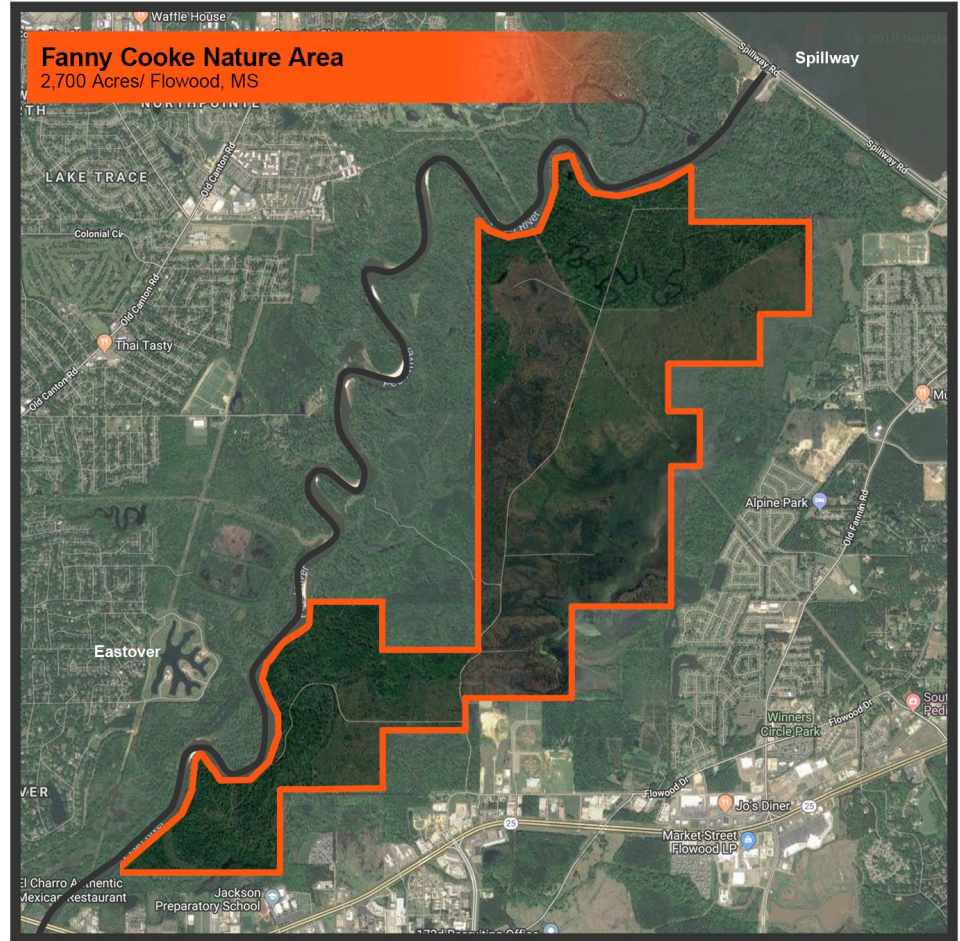
- City of Jackson property at end of Meadowbrook Rd
- Fanny Cook Natural Area locations
- Lakeland Dr Bridge
- Old Railway Bridge (south of lowhead dam-potential pedestrian access)
- Belhaven Beach (end of Laurel St)
- Old Brandon Rd turnoff (current small parking lot with memorial at “overlook”) site of old Woodrow Wilson Bridge, National Register of Historic Places
- Town Creek (trail for joggers and walkers from downtown)
- Hwy 80



Fannye Cooke Natural Area

- Owned and managed by Wildlife Mississippi
- MDOT wetland mitigation bank
- More than 800,000 people live within 60 miles of site

Entergy MS recently donated \$150,000 to the project: “Surveys show that quality of life is a top factor for companies searching for new locations. Communities that build and maintain sustainable green spaces are more likely to attract young labor.”



Jackson's Museum Trail

- 5 miles of paved trail
- Downtown Jackson to Lakeland
- Access 3 public parks and 6 museums
 - JXN Trailblazers
 - May: Jackson City Council approved final easements. Project moving to MDOT design approval phase.
- Potential to connect the Museum Trail to the river at Belhaven Beach area.

Jackson's Museum Trail

More than a park. More than a trail.

Enjoy 5 miles of paved, multi-use trail
Connects Downtown Jackson to Lakeland Drive
Scenic path to cultural attractions in the Capital City
Leads to Mississippi Farmer's Market
Access to 3 public parks and 6 museums
Safe passage over I-55 for non-motorized users.



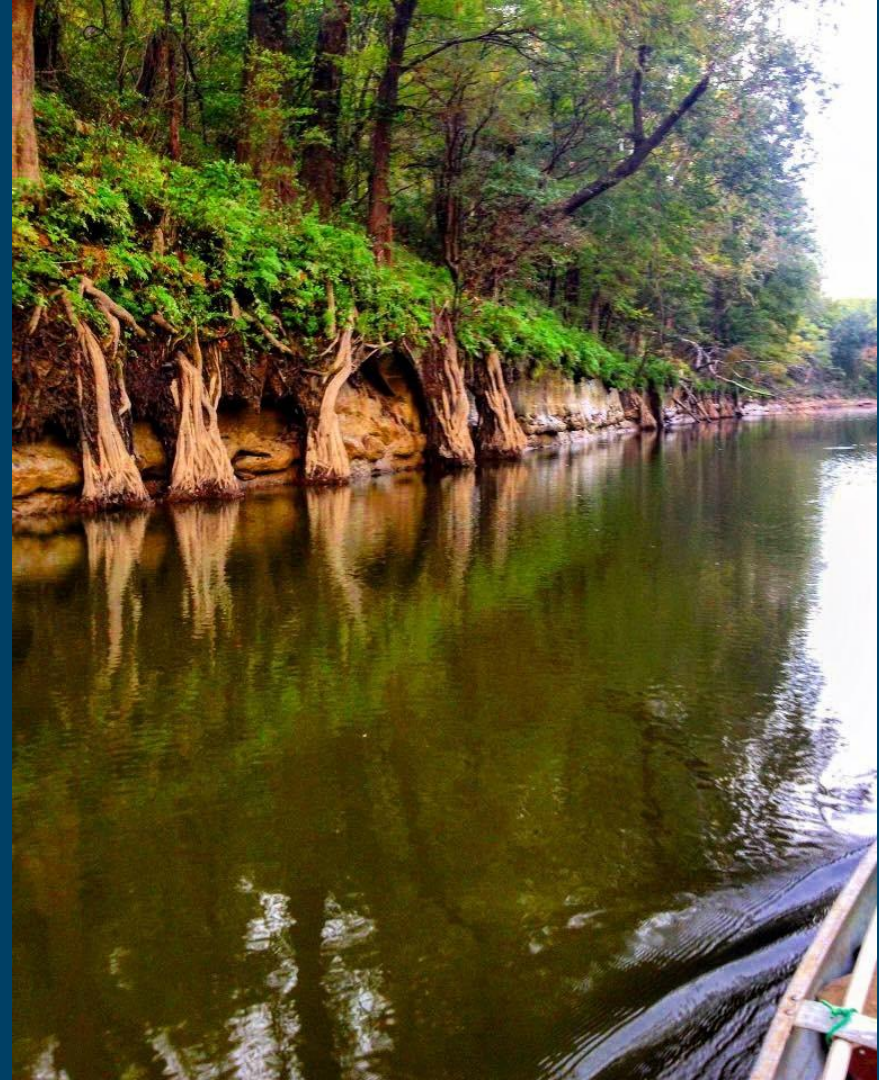
Opportunities south of Jackson

RANKIN/HINDS

- Elton Rd, private property for sale
- Byram Swinging Bridge (National Register of Historic Places)
- Rosemary Bridge, Terry, private, undeveloped access
 - Moncure Rd Bridge

COPIAH/SIMPSON

- Gatesville Rd Bridge, former access point
- Hopewell Rd, former ramp, Carol Berry of Berry's Seafood



Capital City Blueway Community Benefits



Pearl River Recreational Access

- Currently, there are no free public access points along a 66-mile stretch of the Pearl River from the Ross Barnett Reservoir south to the boat launch at the Georgetown Bridge.
 - (There is an entry fee at LeFleur's Bluff State Park. The lowhead dam blocks access to the river south of the park.)
 - Three of the five most populated counties in Mississippi have no access to outdoor water recreation beyond that found at the Ross Barnett Reservoir.
-

Mississippi Statewide Comprehensive Outdoor Recreation Plan (SCORP)

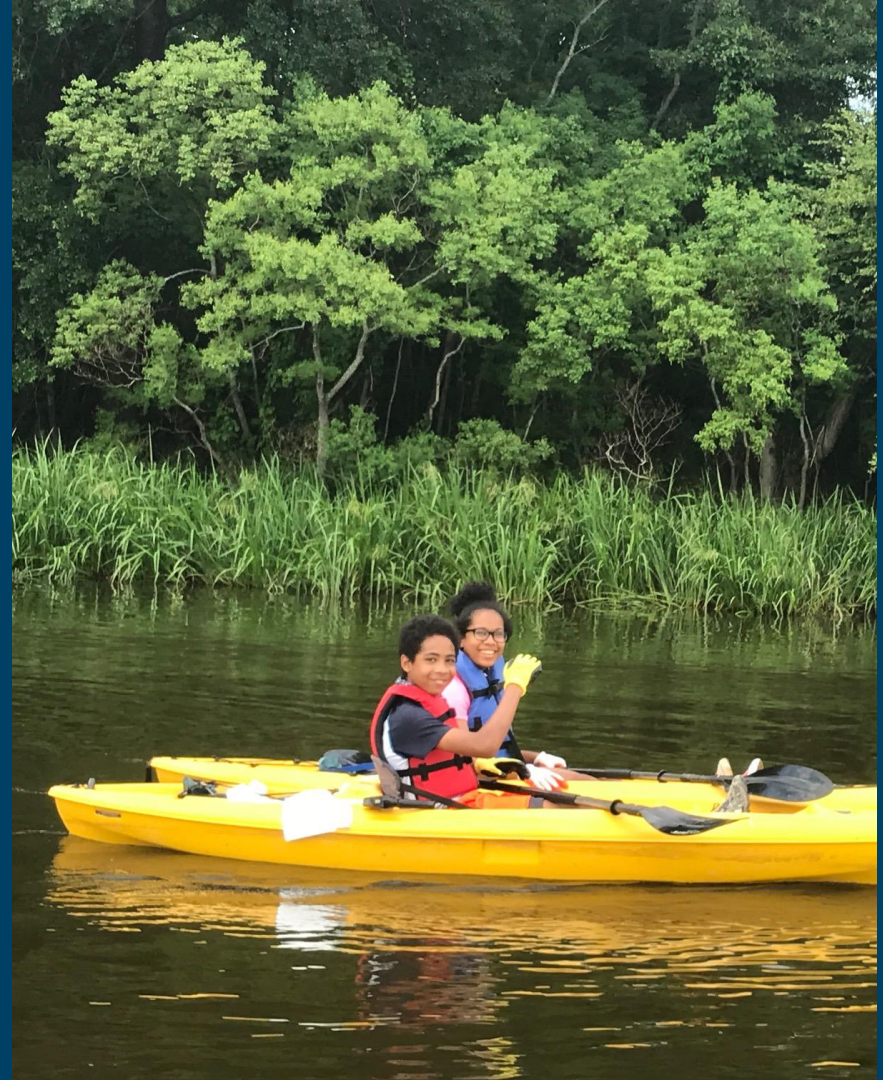
A Capital City Blueway could achieve all of the goals stated in the SCORP 2015-2019:

- Improve health and wellness of Mississippians
- Expand the paths and trail network
- Establish a stronger sense of community
- Strengthen the promotion of outdoor recreation
- Enhance the economy through ecotourism



MS SCORP Park and Program Usage Survey

- 87% chose “Enjoy Being Outdoors” as the reason you and your family participate in park activities
- Number 2 on list of “Would Like to Participate” activities was Canoeing, Kayaking
- When asked “Do you travel outside MS to use over parks?” over half responded yes, with “Access to river kayaking and canoeing” as reason for travel



Capital City Blueway Funding Opportunity

NFWF Five Star and Urban Waters Restoration Program

Seeks to develop nation-wide community stewardship of local natural resources, preserving these resources for future generations and enhancing habitat for local wildlife. Projects seek to address water quality issues in priority watersheds, such as erosion due to unstable streambanks, pollution from stormwater runoff and degraded shorelines caused by development.



NFWF

Five Star and Urban Waters Grant Specifics

- Request for Proposals due Jan 31, 2019
- Any non-federal or state private entity may apply
- \$20,000-\$50,000 grants with average size of \$30,000
- Projects should be completed in 1-2 years and start in summer 2019
- Minimum 1:1 non-federal match is required. Matching funds can be in-kind donation such as volunteer hours.
- Must involve 5 or more partners



NFWF

Five Star and Urban Waters Grant Previous Recipients

- 2018 grant slate:
 - Oyster Restoration in the Lower Wolf River Watershed (The Nature Conservancy and partners will restore 5 acres of subtidal oyster reef habitat in the lower Wolf River watershed within the Bay St. Louis, MS to benefit oysters and associated species.)
 - Educational awareness and trail construction at Bayou Auguste, Biloxi, MS (Land Trust for the MS Coastal Plan and partners will restore Bayou Auguste through trash and invasive species removal on more than 10 acres, and install a trail providing opportunities for the community)
 - 2015 grant slate:
 - Coastal Streambank and Wetland Habitat Restoration at Weeks Bayou, Ocean Springs, MS
 - Crosby Arboretum Quaking Bog Educational Exhibit, Picayune, MS
 - Pascagoula River Audubon Marsh Mitigation, Moss Point, MS
 - 2014 grant slate:
 - Urban Forest Restoration in I.G. Levy Park, Pascagoula, MS
-

Grant Priority 1

On-the-Ground Restoration

- Address key species and habitats
 - *Improve habitat for Capital City Blueway key species to include the endangered ringed map turtle
 - Collect and analyze local waterway samples
 - *Train additional Pearl Riverkeeper Water Rangers volunteers to conduct Water Chemistry and Bacteriological testing at Blueway locations
 - Develop/implement trash and litter prevention programs
 - *Expand current cleanup events including the Pearl River Clean Sweep and Great American Cleanup
 - Develop public open spaces, create or enhance community parks, improve and protect community tree canopy
 - *Create Blueway signage, mapping and add additional kayak launches
-

Grant Priority 2

Environmental Outreach, Education and Training

- Engage the public-particularly youth-in hands-on, outdoor conservation experiences that build awareness of the importance of protecting and recovering priority and/or at risk species and habitats and promote stewardship
- Engage communities in restoration at public areas-such as schools, parks, birding trails and more-for public health and recreation
 - *Blueway educational signs

- Establish or advance citizen science or water quality monitoring program that involves community members and/or addresses community water quality priorities
 - *Pearl Riverkeeper Water Rangers
 - Improve citizen understanding of damaging trash and litter impacts in local waterways that affect community health and local economies
-

Grant Priority 3

Community Partnerships

- Must involve five or more partners (public and private entities) including the applicant
 - Directly engage a diverse group of community partners to achieve ecological and specific educational outcomes including partnerships among upstream and downstream communities
 - Demonstrate that the project will advance existing local watershed or conservation plans and/or propose to foster and coordinate a diverse stakeholder partnership that develops and/or implements new plans
-

Potential Partners

- Backcountry Hunters and Anglers
 - Belhaven, Jackson State, Millsaps
 - Bike Walk Mississippi
 - Blue Cross Blue Shield MS
 - Boy Scouts of America
 - City of Flowood, Parks and Rec
 - City of Jackson and Richland
 - Entergy Mississippi
 - Greater Belhaven Foundation
 - Jackson Audubon Society
 - Jackson Garden Club
 - Jackson Heart Foundation
 - JXN Trailblazers (Museum Trail)
 - Keep Jackson Beautiful
 - LeFleur's Bluff State Park
 - MDOT
 - MDWFP
 - MS Heritage Trust, MS Land Trust
 - MS Main Street Community
 - MS Ultra and Trail Society
 - MS Urban Forestry Council
 - MWF
 - Rotary Club of Jackson
 - Team JXN
 - Wildlife MS
-

MDWFP Boating Access Grant Program

- Assistance to municipal, county and other governmental entities to develop or improve boating access
- 75/25 match program funded through the Sport Fish Restoration, Federal Aid Program
- Cooperator must have full rights to possess and use the site for a minimum of 25 years

John Skains, Program Coordinator



A Capital City Blueway would make the Pearl River more accessible to the larger community, therefore increasing awareness and stewardship of our region's significant freshwater natural resource. A Blueway would also contribute to the region's blue economy, helping to create a multi-seasonal recreational asset that will attract visitors and allow residents to enjoy and benefit from a healthy, outdoor lifestyle.

Thank you!

**For more information, please contact Pearl
Riverkeeper, pearlriverkeeper@gmail.com**
