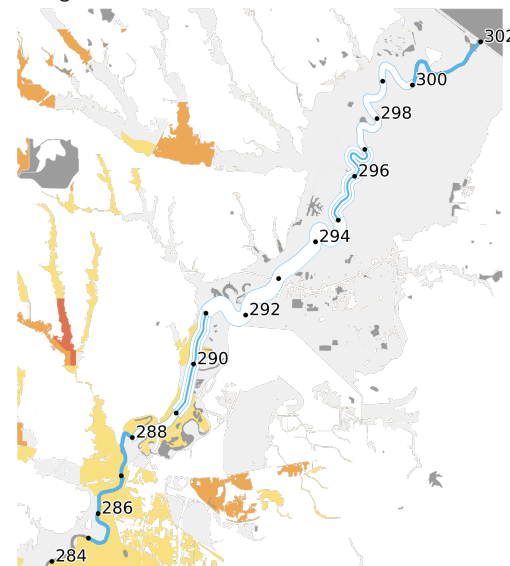


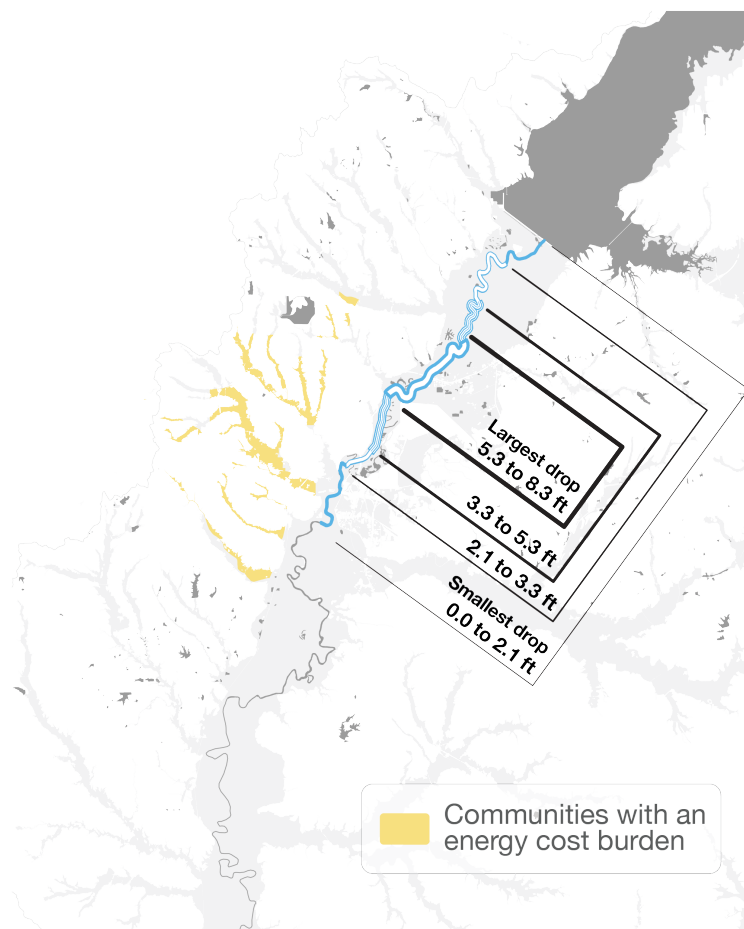
Climate change burden

A community is **disadvantaged by a climate change burden** if 65% or more of its households are low-income and *at least one* of the following risk indicators exceed a specified threshold...

- the expected **agricultural loss** rate due to natural hazards
- the expected **building loss** rate due to natural hazards
- the expected fatalities and injuries due to natural hazards (**population loss**)
- the number of properties in a **high-risk flood area**
- the exposure to potential **wildfire risks**

A number of communities in the Jackson metro are disadvantaged by climate with one or more risk indicators met, including nearly all census tracts within the Town and Lynch Creek floodplains, and the tract along Richland Creek.



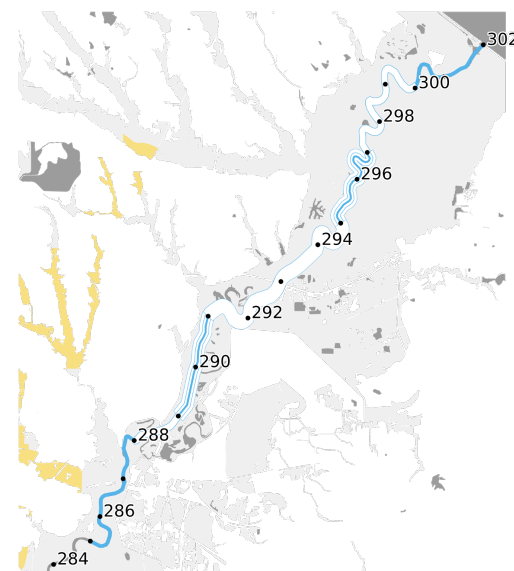


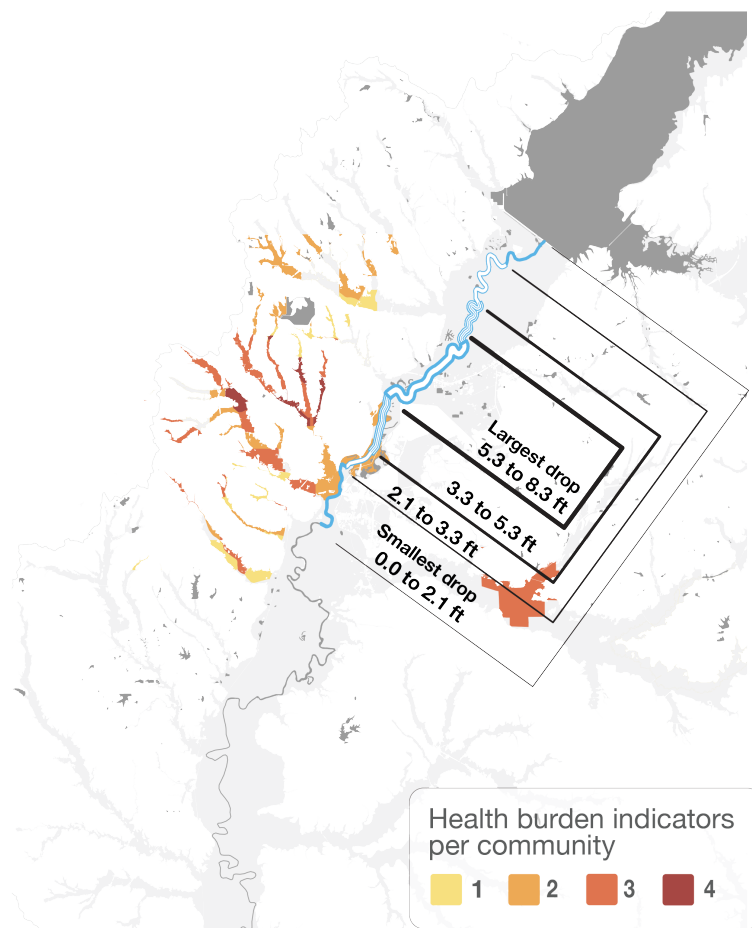
Energy burden

A community is **disadvantaged by an energy burden** if 65% or more of its households are low-income and *at least one* of the following risk indicators exceed a specified threshold...

- the **energy costs** relative to average household income
- the concentration of inhalable pollution (**PM2.5 pollution**)

Several creekside communities in Jackson are disadvantaged due to an energy burden. These communities all meet the first criterion, relatively high energy costs.



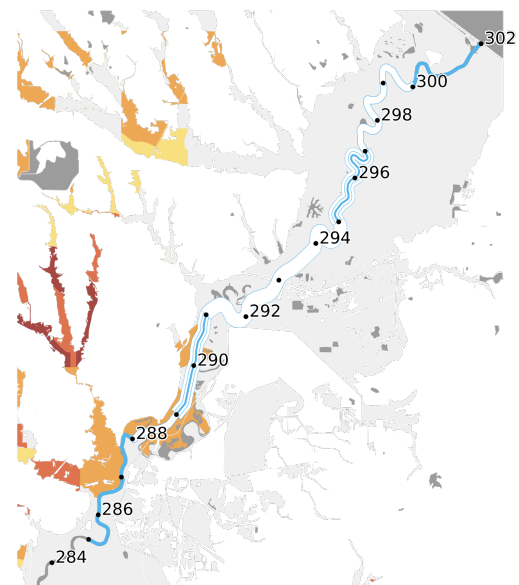


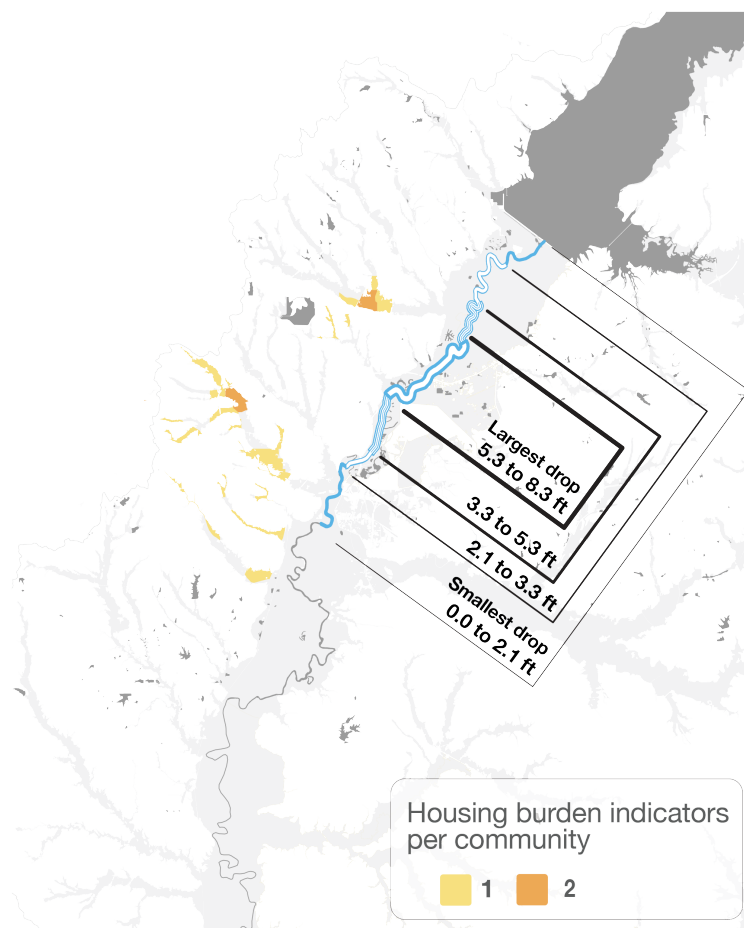
Health burden

A community is **disadvantaged by a health burden** if 65% or more of its households are low-income and *at least one* of the following risk indicators exceed a specified threshold...

- the share of residents with **asthma**
- the share of residents with **diabetes**
- the share of residents with an **angina or coronary heart disease**
- the average remaining life expectancy (**low-life expectancy**)

Multiple communities in the Jackson metro are disadvantaged by a health burden. Several of those in the Town and Lynch Creek floodplains meet all four criteria.



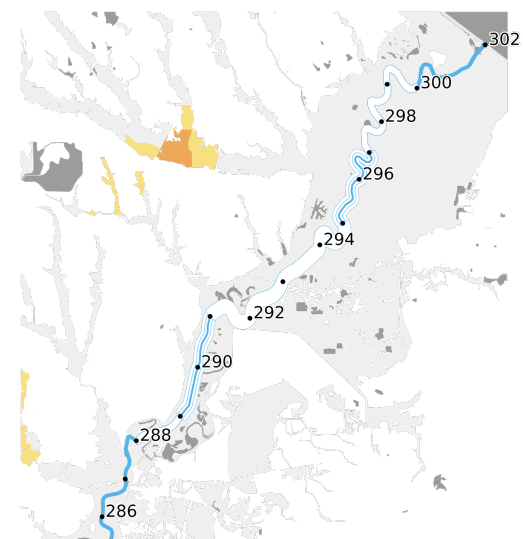


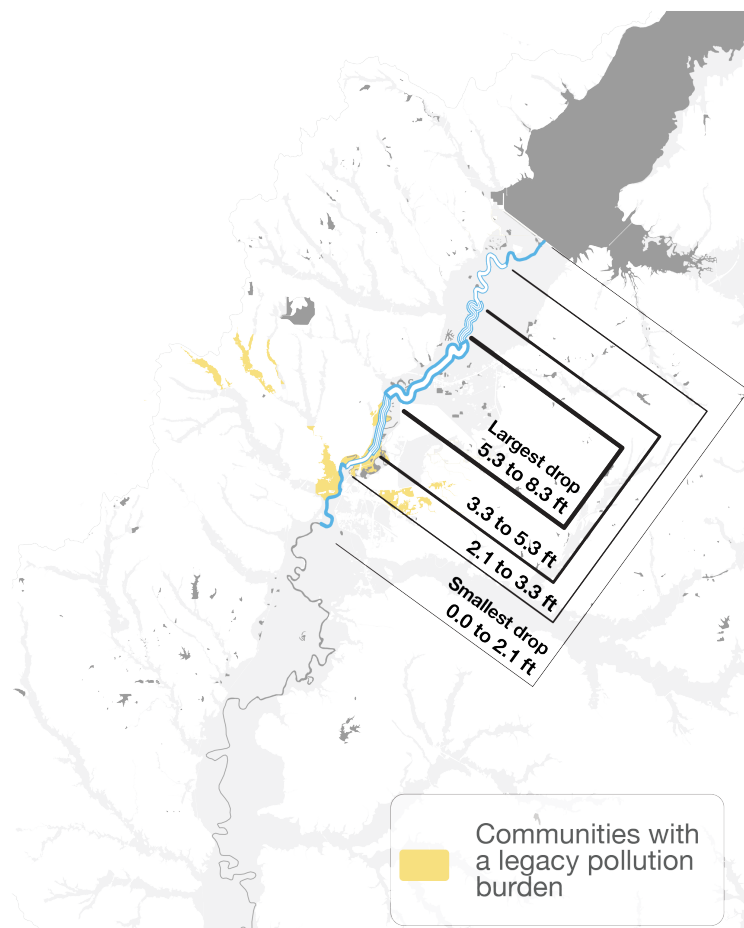
Housing burden

A community is **disadvantaged by a housing burden** if 65% or more of its households are low-income and *at least one* of the following risk indicators exceed a specified threshold...

- the census tract with redlined in the 1930s (**historic underinvestment**)
- the share of relatively low-income households paying 30% or more on **housing costs**
- the portion of land covered by concrete, pavement, or other impervious surfaces (**lack of green space**)
- the share of households without a **plumbing** or an indoor kitchen
- the share of houses built before 1960, which is correlated with elevated **lead paint exposure**.

Some communities in Jackson's creek valleys are disadvantaged by housing burdens.



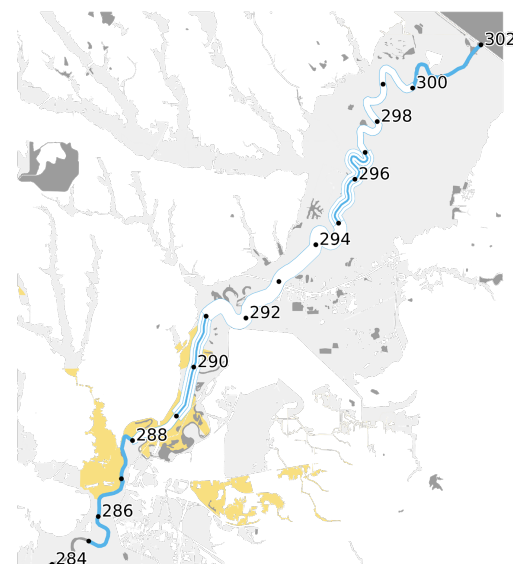


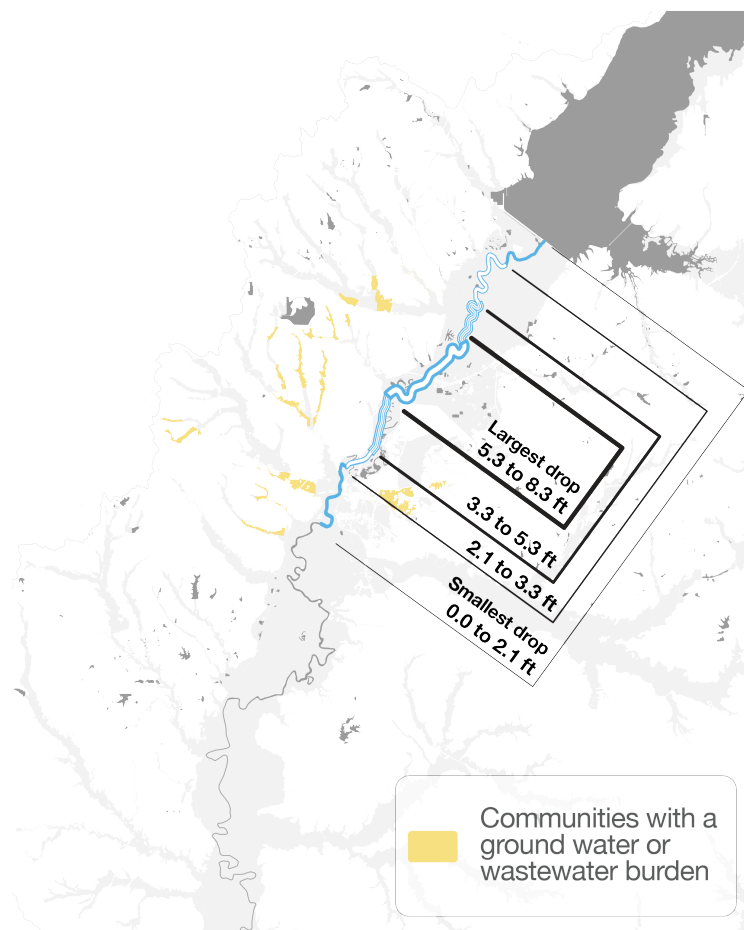
Legacy pollution burden

A community is **disadvantaged by a legacy pollution burden** if 65% or more of its households are low-income and *at least one* of the following risk indicators exceed a specified threshold...

- there is at least one **abandoned mine** in the area
- there is at least one **formerly used defense site**
- the number of and proximity to of **hazardous waste facilities**
- the number of and proximity to of highly-polluted Federal priority sites (**NPL Superfund sites**)
- the number of and proximity to facilities that handle substances with significant environmental and public health risks (**RMP facilities**)
- the concentration of diesel exhaust particles found in the air

A few communities in the Jackson metro are disadvantaged by a legacy pollution burden due to meeting one of the criteria above.



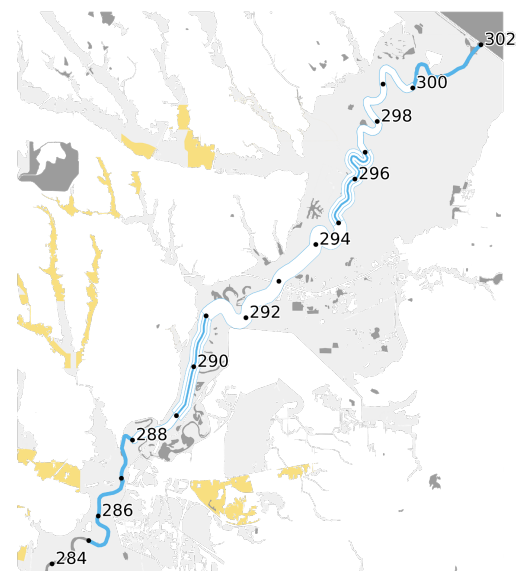


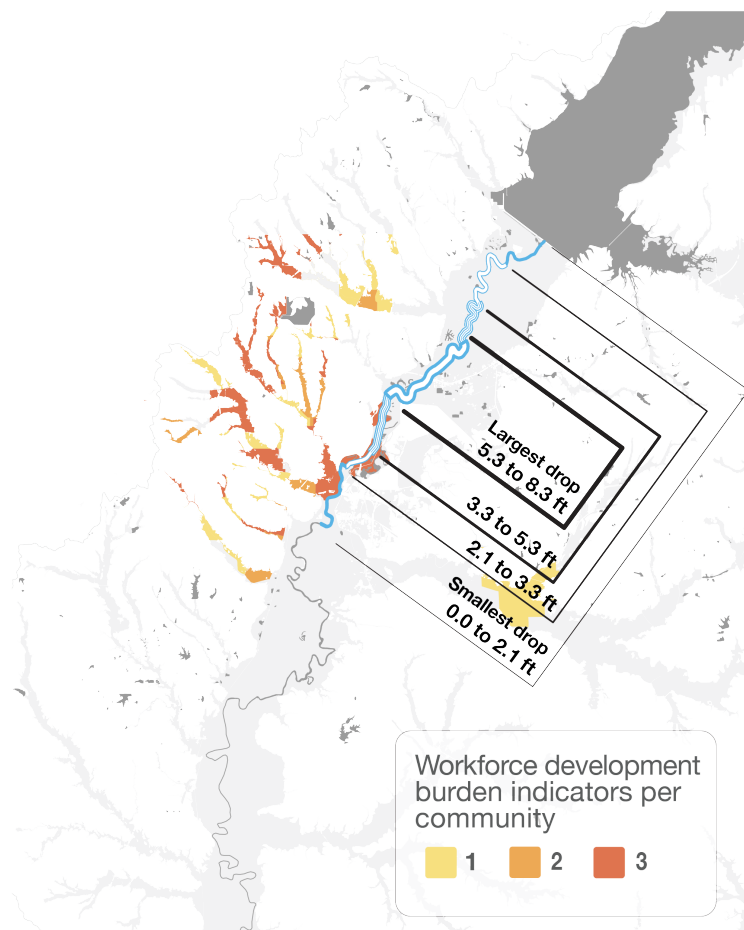
Ground water or wastewater burden

A community is **disadvantaged by a ground water or wastewater burden** if 65% or more of its households are low-income and *at least one* of the following risk indicators exceed a specified threshold...

- the density of **leaking underground storage tanks** and the number of active storage tanks storing petroleum or another hazardous substance in or near the census tract
- the concentration of toxic waste in streams (**wastewater discharge**)

A few communities in the Jackson metro are disadvantaged by a ground water or wastewater burden due to meeting one of the criteria above.





Workforce development burden

A community is **disadvantaged by a workforce development burden** if 10% or more of its adult residents did not graduate from high school and *at least one* of the following risk indicators exceed a specified threshold...

- the share of households where no one over the age of 14 speaks English (**linguistic isolation**)
- the share of **low median income** households, relative to the area's median income
- the share of residents at or below the Federal **poverty level**
- the share of **unemployed** people relative to the labor force

A number of communities are disadvantaged by a workforce development burden. Several within the creek valleys meet three of the four criteria. (None met the linguistic isolation criterion)

